

Basis and dimension.

Recall that $\beta \subseteq V$ is a basis for V if $\text{Span}(\beta) = V$ and β is a lin. indep. set.

We have shown (Theorem 1.8) that if $\beta = \{u_1, \dots, u_n\}$ is a basis for V , then every vector $v \in V$ can be expressed as

$$v = a_1 u_1 + \dots + a_n u_n$$

for a unique choice of the scalars $a_1, \dots, a_n \in F$.

• But how does one find a basis for V ?

Theorem 1.9. If V is a vector space generated by a finite set S , then some subset of S is a basis for V . In particular, V has a finite basis.

Proof.

If $S = \emptyset$ or $S = \{0\}$, then $V = \text{Span}(S) = \{0\}$ and \emptyset is a subset of S that is a basis for V .

Otherwise, S contains a vector $u_1 \neq 0$.

By the previous example, the set $\{u_1\}$ is linearly independent.

If there is $u_2 \in S$ s.t. $\{u_1, u_2\}$ is still linearly indep., add it to $\{u_1\}$ to get $\{u_1, u_2\}$.

If there is $u_3 \in S$ s.t. $\{u_1, u_2, u_3\}$ is lin. indep., add it to obtain the set $\{u_1, u_2, u_3\}$, etc...

Since S is finite, this process must stop on some step n , and we obtain a set

$\beta = \{u_1, \dots, u_n\} \subseteq S$ s.t. β is linearly indep., but $\beta \cup \{x\}$ is lin. dependent for any $x \in S \setminus \beta$.

Claim. β is a basis for V .

• β is lin. indep. — by construction.

• Remains to show: $\text{Span}(\beta) = V$.

By Theorem 1.5, need to show that $S \subseteq \text{Span}(\beta)$ — as $\text{Span}(\beta)$ is a subspace of V containing S , it must also contain $\text{Span}(S) = V$.

Let $v \in S$ be arbitrary.

If $v \in \beta$, then $v \in \text{Span}(\beta)$.

Otherwise, if $v \notin \beta$, then by construction $\beta \cup \{v\}$ is lin. dep. — so $v \in \text{Span}(\beta)$ by Theorem 1.7.

Thus $S \subseteq \text{Span}(\beta)$.

• Existence of a basis in V can be proved without assuming that S is finite as well, but the proof is more involved.

• Thus, any finite generating set for V can be reduced to a basis for V , by removing some vectors.

Example. The set $S = \{(2, -3, 5), (1, 0, -2), (7, 2, 0), (0, 1, 0)\} \subseteq \mathbb{R}^3$ generates \mathbb{R}^3 (check it!)

We reduce it to a basis of \mathbb{R}^3 , as in the proof of Theorem 1.9.

$S_0 = \{(2, -3, 5)\}$ — lin. indep.

$S_1 = \{(2, -3, 5), (1, 0, -2)\}$ — still lin. indep. (check it!)

$S_2 = \{(2, -3, 5), (1, 0, -2), (7, 2, 0)\}$ — lin. indep.

But $(0, 1, 0) \in \text{Span}(S_2)$: $-\frac{7}{30}(2, -3, 5) - \frac{35}{60}(1, 0, -2) + \frac{3}{20}(7, 2, 0) = (0, 1, 0)$.

Hence $\beta = S_2$ is a basis for \mathbb{R}^3 .

Now, the key technical result of this section.

Theorem 1.10 (Replacement). Let V be a v.s. generated by a set $G \subseteq V$ with $|G| = n$, and let $L \subseteq V$ be a lin. indep. subset of V with $|L| = m$.

Then $m \leq n$, and there exists $H \subseteq G$ with $|H| = n - m$ such that $L \cup H$ generates V .

Proof. We prove it by induction on m .

For $m = 0$, $L = \emptyset$, and so we can take $H = G$.

Now suppose the result is true for $m \geq 0$, and we prove it for $m + 1$.

Let $L = \{v_1, \dots, v_{m+1}\} \subseteq V$ be lin. indep., $|L| = m + 1$.

By Theorem 1.6, $\{v_1, \dots, v_{m+1}\}$ is also lin. indep. Applying the induction hypothesis, $m \leq n$ and there is a subset

$\{u_1, \dots, u_{n-m}\} \subseteq G$ s.t. $\{v_1, \dots, v_{m+1}\} \cup \{u_1, \dots, u_{n-m}\}$ generates V .

So, there exist $a_1, \dots, a_m, b_1, \dots, b_{n-m}$ such that

$$a_1 v_1 + \dots + a_m v_m + b_1 u_1 + \dots + b_{n-m} u_{n-m} = v_{m+1} \quad (**)$$

Note. Since $\{v_1, \dots, v_m, v_{m+1}\}$ is lin. indep., we must have $n > m$ (that is, $n \geq m+1$) and some $b_i \neq 0$, say $b_1 \neq 0$. (otherwise v_{m+1} is a lin. combination of v_1, \dots, v_m).

Solving $(**)$ for u_1 gives:

$$u_1 = \left(-\frac{a_1}{b_1}\right)v_1 + \dots + \left(-\frac{a_m}{b_1}\right)v_m + \left(\frac{1}{b_1}\right)v_{m+1} + \left(-\frac{b_2}{b_1}\right)u_2 + \dots + \left(-\frac{b_{n-m}}{b_1}\right)u_{n-m}. \quad (***)$$

Let $H = \{u_2, \dots, u_{n-m}\}$, so $|H| = n - (m+1)$.

Then $u_1 \in \text{Span}(L \cup H)$ by $(***)$, and so $\{v_1, \dots, v_m, u_1, \dots, u_{n-m}\} \subseteq \text{Span}(L \cup H)$.

As $\{v_1, \dots, v_m, u_1, \dots, u_{n-m}\}$ generates V , $\text{Span}(L \cup H) = V$ (by Theorem 1.5)

Thus, the theorem is true for $m+1$.

This theorem has very important consequences.

Corollary 1. Let V be a v.s. having a finite basis. Then every basis for V contains the same number of vectors.

Proof. Suppose $\beta \subseteq V$ with $|\beta| = n$ is a basis for V , and let $\gamma \subseteq V$ be any other basis for V .

Suppose that $|\gamma| > n$, and let $S \subseteq \gamma$ have $n+1$ elements.

Since S is lin. indep. and β generates V , by replacement $n+1 \leq n$ - a contradiction.

Thus $|\gamma| = m \leq n$.

Reversing the roles of β and γ , by the same argument we get $n \leq m$. Hence $n = m$.

This fact makes possible the following important definition.

Definition. A v.s. V is **finite-dimensional** if it has a finite basis.

The (unique) number of vectors in a basis for V is called the **dimension** of V , denoted $\dim(V)$.

If there is no finite basis, then V is **infinite-dimensional**.

Example. In view of the previous discussion, we have:

1) $\dim(\{\emptyset\}) = 0$. (\emptyset is the basis).

2) $\dim(F^n) = n$. ($\{(1, 0, \dots, 0), (0, 1, 0, \dots, 0), \dots, (0, \dots, 0, 1)\}$ is a basis of size n).

3) $\dim(M_{m \times n}) = mn$. ($\{E^{ij} : 1 \leq i \leq m, 1 \leq j \leq n\}$ is a basis of size mn ; recall that $E^{ij} = \begin{pmatrix} 0 & \dots & 1 & \dots & 0 \\ \vdots & & & & \vdots \\ 0 & \dots & 0 & \dots & 0 \end{pmatrix}$).

4) $\dim(P_n(F)) = n+1$. ($\{1, x, x^2, \dots, x^n\}$ is a basis of size $n+1$).

Example. On the other hand, some of the familiar examples are infinite-dimensional.

By the replacement theorem, if V is finite-dimensional, then no lin. indep. set can contain more than $\dim(V)$ elements. Thus:

$P(F)$ is infinite-dimensional (as $\{1, x, x^2, x^3, \dots\}$ is an infinite lin. indep. set).

Corollary 2. Let V be a v.s. of dimension n .

a) Any lin. indep. subset of V with n elements is a basis.

b) Every lin. indep. subset of V can be extended to a basis for V .

Proof. Let β be a basis for V , $|\beta| = n$.

a) Let $L \subseteq V$ be lin. indep. with $|L| = n$. By the Replacement theorem, $\exists H \subseteq \beta$ with $|H| = n - n = 0$ elements such that $L \cup H$ generates V . Thus $H = \emptyset$, and so L gener. V - so L is a basis.

b) If $L \subseteq V$ is lin. indep. with $|L| = m$, by the Replacement theorem $\exists H \subseteq \beta$ with $|H| = n - m$ such that $L \cup H$ generates V . Now $|L \cup H| \leq m + (n - m) = n$.

By Theorem 1.5 $L \cup H$ contains some subset γ which is a basis for V , and $|\gamma| = n$ by Corollary 1. But then $\gamma = L \cup H$.

Theorem 1.11.

Let W be a subspace of a v.s. V with $\dim(V) < \infty$.

Then $\dim(W) \leq \dim(V)$.

Moreover, if $\dim(W) = \dim(V)$, then $V = W$.

Proof.

Let $\dim(V) = n$.

If $W = \{0\}$ then $\dim(W) = 0 \leq n$ (by the previous example).

Otherwise $\exists x_1 \in W, x_1 \neq 0$. So $\{x_1\}$ is a lin. indep. set.

Continue choosing $x_1, \dots, x_k \in W$ s.t. $\{x_1, \dots, x_k\}$ is lin. indep.

Since no lin. indep. subset of V can contain more than n vectors (Cor 1 + Cor 2), this process must stop at a stage where:

$k \leq n$, $\{x_1, \dots, x_k\}$ is lin. indep., but $\{x_1, \dots, x_k\} \cup \{v\}$ is lin. dep. for any $v \in W$.

By Theorem 1.7, this implies $\text{Span}(\{x_1, \dots, x_k\}) = W$, hence $\{x_1, \dots, x_k\}$ is a basis for W .

So $\dim(W) = k \leq n$.

(and by Corollary 2(a), if $k = n$ then $\{x_1, \dots, x_k\}$ is a basis for V , hence $W = V$.)

Corollary. If W is a subspace of a v.s. V with $\dim(V) < \infty$, then any basis for W can be extended to a basis for V .

Proof. If $S \subseteq W$ is a basis for W , it is a lin. indep. subset of V , so can be extended to a basis for V .

Example.

1) Let's describe all subspaces of $V = \mathbb{R}^2$.

We know $\dim(\mathbb{R}^2) = 2$ (as $\{(1,0), (0,1)\}$ is a basis).

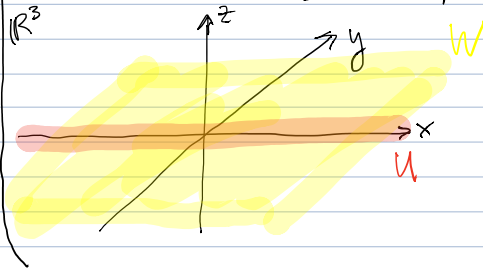
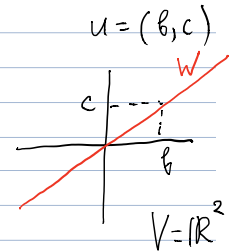
By Theorem 1.11, for every subspace $W \subseteq \mathbb{R}^2$ we must have $\dim(W) = 0, 1$ or 2 .

If $\dim(W) = 0$ then $W = \{0\}$ and if $\dim(W) = 2$ then $W = \mathbb{R}^2$.

And if $\dim(W) = 1$, then $W = \{a \cdot u : a \in F\}$ for some non-zero vector $u \in \mathbb{R}^2$.

2) If $V = \mathbb{R}^3$, then $\dim(V) = 3$, and for $W = \{(a,b,0) : a,b \in \mathbb{R}\}$ we have $\dim(W) = 2$.

(as $\{(1,0,0), (0,1,0)\}$ is a basis for W) and $\dim(U) = 1$ for $U = \{(a,0,0) : a \in \mathbb{R}\}$.



W is the xy -plane
 U is the x -axis

We can list all subspaces of \mathbb{R}^3 :

$\dim(W) = 0$ - W is the origin point,

$\dim(W) = 1$ - W is a line through the origin,

$\dim(W) = 2$ - W is a plane through the origin,

$\dim(W) = 3$ - $W = \mathbb{R}^3$.

Linear transformations

Definition. Let V and W be v.s. (over F).

A function $T: V \rightarrow W$ is a linear transformation from V to W if, for all $x, y \in V$ and $c \in F$:

(a) $T(x+y) = T(x) + T(y)$

(b) $T(cx) = cT(x)$

addition and scalar mult.
in V

addition and scalar
mult. in W .

Basic properties of linear transformations

Let $T: V \rightarrow W$ be a lin. transformation. Then:

1) $T(0) = 0$

2) $T(cx + y) = cT(x) + T(y)$ for all $x, y \in V, c \in F$. (This holds if and only if T is linear).

3) $T(x-y) = T(x) - T(y)$

4) $T(\sum_{i=1}^n a_i x_i) = \sum_{i=1}^n a_i T(x_i)$ for all $x_i \in V, a_i \in F$.

Proof. Exercise.

Example. Some examples of lin. transformations $T: \mathbb{R}^2 \rightarrow \mathbb{R}^2$.

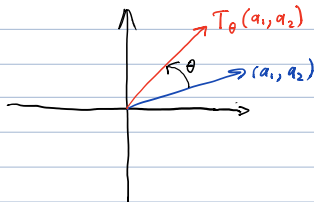
1) $T(a_1, a_2) = (3a_1, 3a_2)$.

2) For any $\theta \in \mathbb{R}$, define:

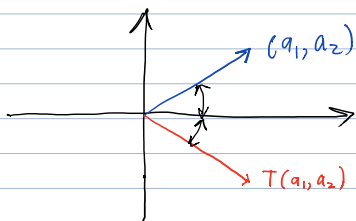
$$T_\theta: \mathbb{R}^2 \rightarrow \mathbb{R}^2$$

$$T_\theta(a_1, a_2) = (a_1 \cos \theta - a_2 \sin \theta, a_1 \sin \theta + a_2 \cos \theta). \quad \text{— check that } T \text{ is linear!}$$

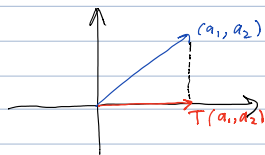
— the **rotation (counterclockwise)** by the angle θ .



3) $T(a_1, a_2) = (a_1, -a_2)$ — the **reflection** about the x-axis.



4) $T(a_1, a_2) = (a_1, 0)$ — the **projection** on the x-axis.



Example. We define $T: M_{m \times n}(F) \rightarrow M_{n \times m}(F)$ by $T(A) = A^t$, where A^t is the transpose of A . Then T is a lin. transformation.

Example. Define $T: P_n(\mathbb{R}) \rightarrow P_{n-1}(\mathbb{R})$ by $T(f(x)) = f'(x)$, where $f'(x)$ denotes the derivative of $f(x)$. To show that T is linear, let $g(x), h(x) \in P_n(\mathbb{R})$ and $a \in \mathbb{R}$ be arbitrary. Then:
 $T(ag(x) + h(x)) = (ag(x) + h(x))' = ag'(x) + h'(x) = a \cdot T(g(x)) + T(h(x))$.

Example. Let $V = C(\mathbb{R})$, the vector space of continuous real-valued functions on \mathbb{R} .

Let $a, b \in \mathbb{R}$, $a < b$ be fixed. We define $T: V \rightarrow \mathbb{R}$ (re v.s. \mathbb{R}) by:

$$T(f) = \int_a^b f(t) dt$$

for all functions $f \in V$.

Then T is linear (because $\int_a^b (ag(t) + h(t)) dt = a \int_a^b g(t) dt + \int_a^b h(t) dt = a \cdot T(g) + T(h)$).

Null space and range.

Definition. Let V and W be v.s., and $T: V \rightarrow W$ be linear.

- 1) Let $N(T) = \{x \in V : T(x) = 0\}$ — the **null space (or kernel)** of T .
- 2) Let $R(T) = \{T(x) : x \in V\}$ — the **range (or image)** of T .

Example. Let V and W be v.s.

1) We define $I: V \rightarrow V$ by $I(x) = x$ for all $x \in V$ — the **identity transformation**.

Then I is linear, $N(I) = \{0\}$ and $R(I) = V$.

2) We define $T_0: V \rightarrow W$ by $T_0(x) = 0$ for all $x \in V$ — the **zero transformation**.

Then T_0 is linear, $N(T_0) = V$ and $R(T_0) = \{0\}$.

Theorem 2.1. Let V, W be v.s and $T: V \rightarrow W$ linear.

Then $N(T)$ and $R(T)$ are subspaces of V and W , respectively.

Proof.

1) $N(T)$ is a subspace of V .

(a) $0 \in N(T)$ — as $T(0) = 0$.

b), c) Let $x, y \in N(T)$ and $c \in F$.

Then $T(x+y) = T(x) + T(y) = 0 + 0 = 0$ and $T(cx) = c \cdot T(x) = c \cdot 0 = 0$.

Hence $x+y \in N(T)$ and $cx \in N(T)$.

So $N(T)$ is a subspace of V .

2) $R(T)$ is a subspace of W .

Analogous (do it!).

Theorem 2.2 Let V, W be v.s and $T: V \rightarrow W$ linear.

If $\beta = \{v_1, \dots, v_n\}$ is a basis for V , then

$$R(T) = \text{Span}(T(\beta)) = \text{Span}(\{T(v_1), \dots, T(v_n)\}).$$

Proof. Clearly $T(v_i) \in R(T)$ for each i .

As $R(T)$ is a subspace of W , $\text{Span}(\{T(v_1), \dots, T(v_n)\}) = \text{Span}(T(\beta)) \subseteq R(T)$ (by Theorem 1.5)

Suppose $w \in R(T)$, then $w = T(v)$ for some $v \in V$.

As β is a basis for V , we have

$$v = \sum_{i=1}^n a_i v_i \text{ for some } a_i \in F.$$

And since T is linear,

$$w = T(v) = \sum_{i=1}^n a_i T(v_i) \in \text{Span}(T(\beta)).$$

Hence $R(T) \subseteq \text{Span}(T(\beta))$.

Definition. Let V, W be v.s and $T: V \rightarrow W$ linear.

If $N(T), R(T)$ are finite-dimensional, then we define

$$\text{nullity}(T) = \dim(N(T)),$$

$$\text{rank}(T) = \dim(R(T)).$$

• Intuitively, if $N(T)$ is "large" (that is, T sends many vectors from V to 0), then $R(T)$ should be "small" (not so many vectors in W can be obtained by T from the vectors in V). And vice versa.

Theorem 2.3 (Dimension Theorem). Let V, W be v.s and $T: V \rightarrow W$ linear. If $\dim(V) < \infty$ then $\text{nullity}(T) + \text{rank}(T) = \dim(V)$.

Proof.

Suppose that $\dim(V) = n$, $\dim(N(T)) = k$, and $\{v_1, \dots, v_k\}$ is a basis for $N(T)$.

By the Corollary to Theorem 1.11:

Can extend $\{v_1, \dots, v_k\}$ to a basis $\beta = \{v_1, \dots, v_k, v_{k+1}, \dots, v_n\}$ for V .

Claim. $S = \{T(v_{k+1}), \dots, T(v_n)\}$ is a basis for $R(T)$.

• S generates $R(T)$.

As $T(v_i) = 0$ for $1 \leq i \leq k$, by Theorem 2.2:

$$R(T) = \text{Span}(\{T(v_1), \dots, T(v_n)\}) = \text{Span}(\{T(v_{k+1}), \dots, T(v_n)\}) = \text{Span}(S).$$

• S is lin. indep.:

Suppose $\sum_{i=k+1}^n b_i T(v_i) = 0$ for $b_{k+1}, \dots, b_n \in F$.

As T is linear, $T(\sum_{i=k+1}^n b_i v_i) = 0$.

So $\sum_{i=k+1}^n b_i v_i \in N(T)$.

Hence $\exists c_1, \dots, c_k \in F$ such that $\sum_{i=k+1}^n b_i v_i = \sum_{i=1}^k c_i v_i$, or $\sum_{i=1}^k (-c_i) v_i + \sum_{i=k+1}^n b_i v_i = 0$.

Since β is a basis for V , we have $b_i = 0$ for all i .

Hence S is lin. indep.

So $\dim(V) = n$, $\dim(N(T)) = k$ and $\dim(R(T)) = n - k$.